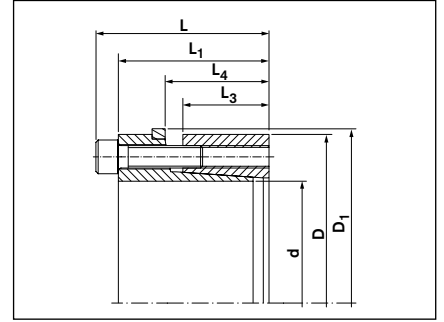
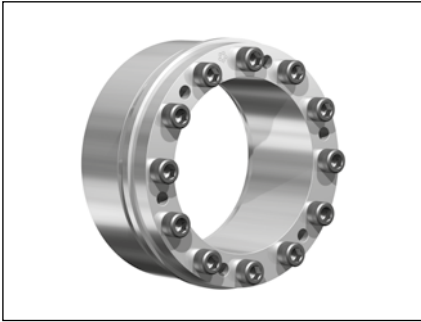


Locking Assemblies

7007 ECOLOC



Dimensions

Explanations

- d** = Inner ring diameter
- D** = Outer diameter
- D₁** = Collar outer diameter
- L** = Overall width
- L₁** = Overall width (without screws)

- L₃** = Clamping length
- L₄** = Installation length up to collar
- T** = Transmissible torque at given T_A
- F_{ax}** = Transmissible axial force
- T_A** = Max. tightened torque of the screws

- PW** = Surface pressure on shaft at given T_A
- PN** = Surface pressure on hub at given T_A
- n_{Sc}** = Quantity of locking screws
- D_G** = Thread

Metric dimensions													Screws ISO 4762-12.9	
d	x	D	D ₁	L	L ₁	L ₃	L ₄	T	F _{ax}	T _A	PW	PN	n _{Sc}	D _G
mm				mm				Nm	kN	Nm	N/mm ²			
19	x	47	53	45	39	26	31	320	33	17	180	70	6	x M 6
20	x	47	53	45	39	26	31	330	33	17	170	70	6	x M 6
22	x	47	53	45	39	26	31	370	33	17	155	70	6	x M 6
24	x	50	56	45	39	26	31	400	33	17	140	70	6	x M 6
25	x	50	56	45	39	26	31	420	33	17	135	70	6	x M 6
28	x	55	61	45	39	26	31	470	33	17	120	60	6	x M 6
30	x	55	61	45	39	26	31	500	33	17	115	60	6	x M 6
32	x	60	66	45	39	26	31	710	44	17	140	75	8	x M 6
35	x	60	66	45	39	26	31	780	44	17	130	75	8	x M 6
38	x	65	71	45	39	26	31	850	44	17	120	70	8	x M 6
40	x	65	71	45	39	26	31	890	44	17	110	70	8	x M 6
42	x	75	81	55	47	30	36	1.270	61	41	130	70	6	x M 8
45	x	75	81	55	47	30	36	1.360	61	41	120	70	6	x M 8
48	x	80	86	55	47	30	36	1.940	81	41	150	90	8	x M 8
50	x	80	86	55	47	30	36	2.020	81	41	145	90	8	x M 8
55	x	85	91	55	47	30	36	2.220	81	41	130	85	8	x M 8
60	x	90	96	55	47	30	36	2.430	81	41	120	80	8	x M 8
65	x	95	101	55	47	30	36	2.630	81	41	110	75	8	x M 8
70	x	110	116	72	62	40	46	4.580	131	83	125	80	8	x M 10
75	x	115	121	72	62	40	46	4.900	131	83	115	75	8	x M 10
80	x	120	126	72	62	40	46	5.230	131	83	110	70	8	x M 10
85	x	125	131	72	62	40	46	6.950	163	83	125	85	10	x M 10
90	x	130	136	72	62	40	46	7.350	163	83	120	85	10	x M 10
95	x	135	141	72	62	40	46	7.760	163	83	115	80	10	x M 10
100	x	145	151	89	77	46	52	9.780	196	83	115	80	8	x M 12

Material: Steel

To continue see next page

Locking Assemblies
7007 ECOLOC

Metric dimensions													Screws ISO 4762-12.9		
d	x	D	D ₁	L	L ₁	L ₃	L ₄	T	F _{ax}	T _A	PW	PN	n _{Sc}	D _G	
mm				mm				Nm	kN	Nm	N/mm ²				
110	x	155	161	89	77	46	52	10.750	196	145	100	75	8	x	M 12
120	x	165	171	89	77	46	52	14.660	244	145	115	85	10	x	M 12
130	x	180	186	89	77	46	52	19.060	293	145	130	95	12	x	M 12
140	x	190	196	98	84	51	59	23.600	337	230	125	90	10	x	M 14
150	x	200	206	98	84	51	59	30.340	405	230	140	105	12	x	M 14
160	x	210	216	98	84	51	59	32.360	405	230	130	100	12	x	M 14
170	x	225	231	98	84	51	59	40.120	472	230	145	110	14	x	M 14
180	x	235	241	98	84	51	59	42.480	472	230	135	105	14	x	M 14
190	x	250	259	98	84	51	59	46.400	488	230	136	104	15	x	M 14
200	x	260	259	98	84	51	59	48.800	488	230	130	100	15	x	M 14

Material: Steel

More sizes on request

Ordering example:

Type	d x D
7007 ECOLOC	110 x 155

Technical Information
■ Surface finishes

For shafts and hub bores

R_a = 1,6 µm
■ Tolerances

We recommend the following mounting tolerances

Shaft: h8 · Hub: H8

Subject to technical changes.