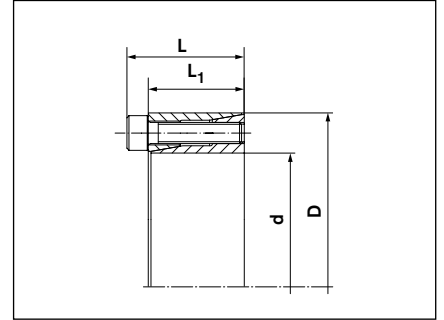


**Locking Assemblies**

# 7061 ECOLOC



Dimensions

**Explanations**

- d** = Inner ring diameter
- D** = Outer diameter
- L** = Overall width
- L<sub>1</sub>** = Overall width (without screws)

- T** = Transmissible torque at given  $T_A$
- F<sub>ax</sub>** = Transmissible axial force
- T<sub>A</sub>** = Max. tightened torque of the screws
- p<sub>w</sub>** = Surface pressure on shaft at given  $T_A$

- p<sub>N</sub>** = Surface pressure on hub at given  $T_A$
- n<sub>Sc</sub>** = Quantity of locking screws
- D<sub>G</sub>** = Thread

Metric dimensions										Screws ISO 4762-12.9		
d	x	D	L	L <sub>1</sub>	T	F <sub>ax</sub>	T <sub>A</sub>	p <sub>w</sub>	p <sub>N</sub>	n <sub>Sc</sub>	D <sub>G</sub>	
mm			mm		Nm	kN	Nm	N/mm <sup>2</sup>				
6	x	16	13,5	11	6	2	1,2	150	55	3	x	M 2,5
6,35	x	16	13,5	11	6	2	1,2	140	55	3	x	M 2,5
7	x	17	13,5	11	8	2	1,2	125	55	3	x	M 2,5
8	x	18	13,5	11	10	2,5	1,2	110	50	3	x	M 2,5
9	x	20	15,5	13	15	3	1,2	120	55	4	x	M 2,5
9,53	x	20	15,5	13	15	3	1,2	110	55	4	x	M 2,5
10	x	20	15,5	13	15	3	1,2	110	55	4	x	M 2,5
11	x	22	15,5	13	18	3	1,2	100	50	4	x	M 2,5
12	x	22	15,5	13	20	3	1,2	90	50	4	x	M 2,5
14	x	26	20	17	35	5	2,1	105	55	4	x	M 3
15	x	28	20	17	40	5	2,1	100	50	4	x	M 3
16	x	32	21	17	70	8	4,9	130	65	4	x	M 4
17	x	35	25	21	75	8	4,9	120	60	4	x	M 4
18	x	35	25	21	80	8	4,9	115	60	4	x	M 4
19	x	35	25	21	85	8	4,9	110	60	4	x	M 4
20	x	38	26	21	150	15	9,7	140	75	4	x	M 5
22	x	40	26	21	160	14	17	130	70	4	x	M 5
24	x	47	32	26	250	20	17	140	75	4	x	M 6
25	x	47	32	26	260	20	17	135	75	4	x	M 6
25,40	x	47	32	26	265	20	17	130	75	4	x	M 6
28	x	50	32	26	440	30	17	185	100	6	x	M 6
30	x	55	32	26	470	30	17	175	95	6	x	M 6
32	x	55	32	26	500	30	17	165	95	6	x	M 6
35	x	60	37	29	730	40	17	165	95	8	x	M 6
38	x	65	37	29	800	40	17	155	90	8	x	M 6
40	x	65	37	29	840	40	17	145	90	8	x	M 6
42	x	75	44	36	1.200	55	41	165	90	6	x	M 8

Material: Steel

To continue see next Page

Locking Assemblies

## 7061 ECOLOC

Metric dimensions					T	F <sub>ax</sub>	T <sub>A</sub>	P <sub>W</sub>	P <sub>N</sub>	Screws ISO 4762-12.9		
d	x	D	L	L <sub>1</sub>						n <sub>Sc</sub>	D <sub>G</sub>	
mm			mm		Nm	kN	Nm	N/mm <sup>2</sup>				
45	x	75	44	36	1.300	55	41	155	90	6	x	M 8
48	x	80	44	36	1.850	75	41	195	115	8	x	M 8
50	x	80	44	36	1.900	75	41	185	115	8	x	M 8

Material: Steel

More sizes on request

Ordering example:

Type	d x D
7061 ECOLOC	6 x 16

Technical Information

■ Surface finishes

For shafts and hub bores

**R<sub>a</sub> = 1,6 μm**

■ Tolerances

We recommend the following mounting tolerances

**Shaft: h8 · Hub: H8**

Subject to technical changes.