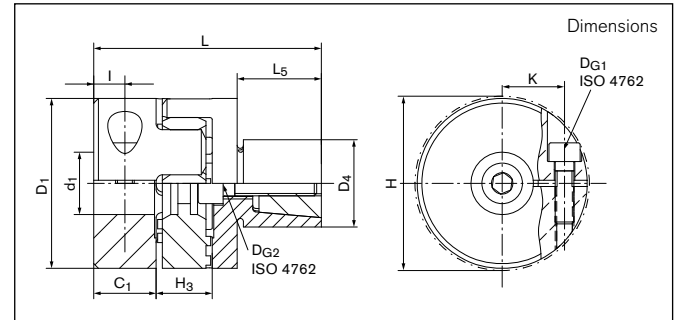


**Backlash-free
Servo-Insert Couplings**

GERWAH® GWE 5107



Dimensions

d_{1min} = Min. bore diameter

d_{1max} = Max. bore diameter

d_{1kmin} = Min. bore diameter with keyway
acc. to DIN 6885-1

d_{1kmax} = Max. bore diameter with keyway
acc. to DIN 6885-1

C₁ = Guided length in hub boring

D₁ = Outer diameter hub

D₄ = Outer diameter of the cone hub

H = Clearance diameter

H₃ = Length of damping part

I = Distance between center screw hole
and hub end

K = Distance shaft axis - clamping screw axis

L = Total length

L₅ = Expanding mandrel length

Size	d ₁ min-max		C ₁	D ₁	D ₄	H	H ₃	I	K	L	L ₅
	Without keyway	With keyway									
	mm	mm	mm	mm	mm	mm	mm	mm	mm	mm	mm
9	4 - 11	6 - 11	8	19,5	10-15	22,5	10	4	7,3	34	12
12	4 - 12	6 - 12	7	25	10-15	26	12	3,5	8,5	38	12
14	5 - 15	6 - 15	9,5	29,5	13-25	33	13	5	10,5	48	20
19	8 - 22	8 - 22	17	39,5	14-30	43	16	6	15	65	25
24	10 - 31	10 - 31	20	54,5	23-36	56	18	10	20	73	27
28	14 - 35	14 - 35	21,5	64,5	26-42	67	19	11	23,5	83	32

Transmission of the couplings transmissible torque T can not longer be guaranteed for certain with borings < d_{min}. Types with borings < d_{min}, however, can be supplied.

Moment of inertia and weight (mass) are calculated with reference to the largest bore size.

To continue see next page

Backlash-free Servo-Insert Couplings
GERWAH® GWE 5107
Technical Data

T = Transmissible torque at given T_A
H_{es} = Hardness of the elastomeric spider
n_{max} = Max. rotation speed

J = Total moment of inertia
Gw = Weight
D_{G1}, D_{G2} = Thread diameter

T_{A1} = Tightened torque of clamping screw (G1)
T_{A2} = Tightened torque of clamping screw (G2)

Size	T	H _{es}	n _{max}	J	Gw	D _{G1}	T _{A1}	D _{G2}	T _{A2}
	Nm		1/min	10 ⁻³ Kgm ²	kg	mm	Nm	mm	Nm
9	3	92 SH A	19000	0,002	0,04	1 x M2,5	0,75	1 x M4	4
12	5	92 SH A	15000	0,0046	0,063	1 x M3	1,5	1 x M4	4
14	12,5	98 SH A	13000	0,011	0,11	1 x M4	5	1 x M5	9
19	17	98 SH A	10000	0,045	0,26	1 x M5	10	1 x M6	12
24	60	98 SH A	7000	0,164	0,51	1 x M6	18	1 x M8	32
28	160	98 SH A	6000	0,373	0,83	1 x M8	43	1 x M10	60

Transmissible torque T [Nm]

Size	Ø4	Ø5	Ø6	Ø8	Ø10	Ø12	Ø14	Ø15	Ø18	Ø20	Ø25	Ø26	Ø28	Ø30
9	1,7	2,1	2,4	3	3	---	---	---	---	---	---	---	---	---
12	2,9	3,6	4,5	5	5	5	---	---	---	---	---	---	---	---
14	---	9	11	12,5	12,5	12,5	12,5	13	---	---	---	---	---	---
19	---	---	---	17	17	17	17	17	17	17	---	---	---	---
24	---	---	---	---	44	52	60	60	60	60	60	60	60	60
28	---	---	---	---	---	---	113	120	141	155	160	160	160	160

Ordering example: GWE 5107

Series/Size	Bore diameter d ₁	Outer Diameter of the cone hub D ₄	Further details
GWE 5107-24	25	28	*

* Keyway

Subject to technical changes.