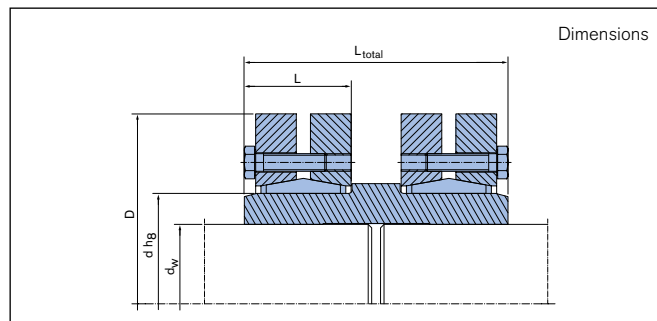
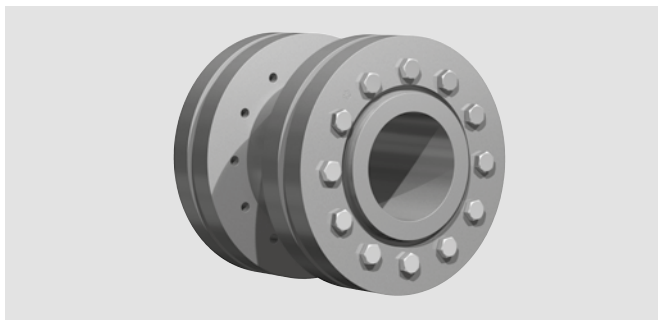


RINGFEDER® Shaft Couplings

RfN 5071



d = Inner diameter	L_{total} = Total length (several parts)	T = Transmissible torque at given T_A
D = Outer diameter	L = Overall width	F_{ax} = Transmissible axial force
d_w = Solid shaft diameter	T_A = Max. tightened torque of the screws	D_G = Thread

Shaft couplings dimensions					T _A	Transmissible torques or axial forces		Locking screws	
d	x	D	d _w	L _{total}		L	T	F _{ax}	
mm			mm	mm	mm	Nm	Nm	kN	D _G
20	x	46	15	45	21	4	110	20	M5
			16				22		
			17				24		
24	x	50	19	50	23	5	240	32	M5
			20				35		
			21				38		
30	x	52	24	55	26	5	350	38	M5
			25				41		
			26				43		
36	x	72	28	65	28	12	590	53	M6
			30				58		
			31				58		
40	x	72	30	65	29	12	720	61	M6
			31				59		
			32				62		
44	x	80	32	70	30	12	800	63	M6
			35				73		
			36				76		
50	x	90	38	80	32	12	1.350	89	M6
			40				96		
			42				103		
55	x	100	42	85	35	12	1.300	78	M6
			45				87		
			48				96		
62	x	110	48	90	35	12	2.400	126	M6
			50				133		
			52				136		
68	x	115	50	100	35	12	1.900	95	M6
			55				104		
			60				121		

For all shaft couplings intermediate values for T and F_{ax} can be calculated dependent on T_A and the clearance S. In addition, stepped shaft couplings are available for different shaft diameters.
If required, we like to be of assistance.

To continue see next page

RINGFEDER® Shaft Couplings

RfN 5071

Shaft couplings dimensions					T _A	Transmissible torques or axial forces		Locking screws ISO 4014 / 4017 - 10.9		
d	x	D	d _w	L _{total}		L	T	F _{ax}	D _G	
mm			mm	mm	mm	Nm	kN			
75	x	138	55	120	38	30	2.650	121	M8	For all shaft couplings intermediate values for T and F _{ax} can be calculated dependent on T _A and the clearance S. In addition, stepped shaft couplings are available for different shaft diameters. If required, we like to be of assistance.
			60				3.300	139		
			65				4.050	158		
80	x	145	60	130	38	30	3.200	126	M8	
			65				3.900	143		
			70				4.600	160		
90	x	155	65	140	45	30	4.800	174	M8	
			70				6.050	195		
			75				7.340	215		
100	x	170	70	160	53	30	6.950	202	M8	
			75				7.600	223		
			80				9.100	245		
110	x	185	75	180	60	59	8.150	259	M10	
			80				10.100	285		
			85				12.200	296		
125	x	215	85	200	61	59	11.050	300	M10	
			90				13.100	327		
			95				15.150	355		
140	x	230	95	210	68	100	15.100	365	M12	
			100				17.550	395		
			105				20.000	424		
165	x	290	115	240	81	250	31.400	601	M16	
			120				35.500	637		
			125				39.400	664		
185	x	330	135	265	97	250	52.500	786	M16	
			140				57.350	828		
			145				62.400	870		
200	x	350	150	290	96	250	75.000	1.000	M16	
			155				81.000	1.045		
			160				87.200	1.091		
220	x	370	160	310	114	250	95.000	1.190	M16	
			165				102.000	1.239		
			170				110.000	1.290		
240	x	405	170	350	122	490	120.000	1.464	M20	
			180				138.000	1.576		
			190				156.000	1.675		
260	x	430	190	390	133	490	164.000	1.760	M20	
			200				184.000	1.880		
			210				205.000	2.010		
280	x	460	210	430	147	490	217.000	2.090	M20	
			220				244.000	2.220		
			230				270.000	2.350		
300	x	485	230	445	155	490	275.000	2.431	M20	
			240				295.000	2.567		
			245				315.000	2.636		
320	x	520	240	460	155	490	312.000	2.647	M20	
			250				340.000	2.786		
			260				374.000	2.900		
340	x	570	250	480	169	490	390.000	3.119	M20	
			260				422.500	3.249		
			270				460.000	3.400		
350	x	580	270	490	175	490	442.000	3.276	M20	
			280				480.000	3.430		
			285				500.000	3.500		

To continue see next page

RINGFEDER® Shaft Couplings

RfN 5071

Shaft couplings dimensions					T _A	Transmissible torques or axial forces		Locking screws	
d	x	D	d _w	L _{total}		L	T	F _{ax}	
mm					Nm	Nm	kN	D _G	
360	x	590	280	500	175	463.000	3.310	M20	For all shaft couplings intermediate values for T and F _{ax} can be calculated dependent on T _A and the clearance S. In addition, stepped shaft couplings are available for different shaft diameters. If required, we like to be of assistance.
			290			502.000	3.461		
			295			522.000	3.536		
380	x	645	290	530	183	567.000	3.910	M24	
			300			610.000	4.080		
			310			658.000	4.248		
390	x	660	300	540	183	624.000	4.160	M24	
			310			671.000	4.330		
			320			718.000	4.484		
400	x	680	315	540	183	670.000	4.260	M24	
			320			695.000	4.345		
			330			744.000	4.500		
420	x	690	330	580	203	780.000	4.850	M24	
			340			840.000	5.040		
			350			900.000	5.220		
440	x	750	340	600	220	806.000	4.740	M24	
			350			860.000	4.910		
			360			917.000	5.090		
460	x	770	360	620	220	1.000.000	5.670	M24	
			370			1.070.000	5.860		
			380			1.140.000	6.050		
480	x	800	380	645	230	1.170.000	6.150	M24	
			390			1.240.000	6.350		
			400			1.310.000	6.550		
500	x	850	400	670	230	1.312.000	6.560	M27	
			410			1.380.000	6.730		
			420			1.455.000	6.930		

Ordering example: RfN 5071

Series	D	d _w
RfN 5071	390	320

- Surface finishes for shaft R_a ≤ 3,2 μm
- Tolerances for shaft see table
- When using a hollow shaft instead of a solid shaft please contact our Engineering-Team

d _w		ISO	max. Clearance S mm
above	up to		
10	18	H6/j6	0,014
18	30		0,017
30	50	H6/h6	0,032
50	80	H6/g6	0,048
80	120	H7/g6	0,069
120	180		0,079
180	250		0,090
250	315		0,101
315	400		0,111
400	500		0,123
500	630		0,136
630	800	0,154	

Subject to technical change.