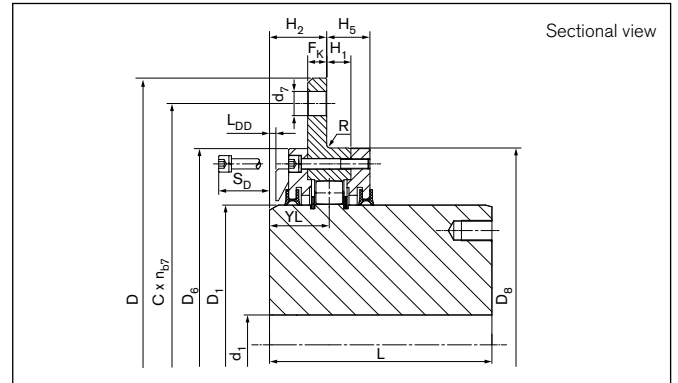
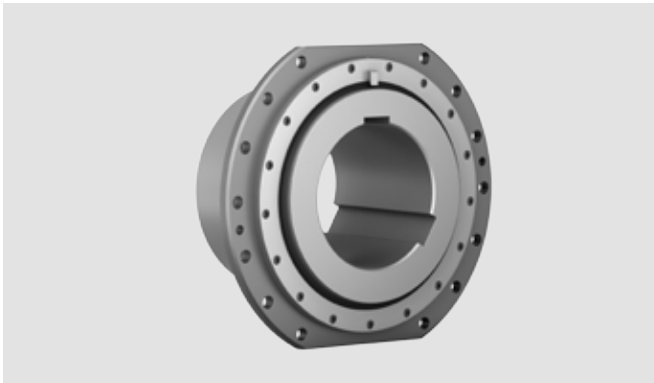


TSCHAN® Barrel Couplings

Type TK

Basic design



Dimensions / Technical data

- T_{Kmax}** = Max. transmissible torque of the coupling
- F_{rad}** = Admissible force radial
- d_{1kmin}** = Min. bore diameter with keyway acc. to DIN 6885-1
- d_{1kmax}** = Max. bore diameter with keyway acc. to DIN 6885-1
- D** = Outer diameter

- L** = Total length
- L_{min}** = Minimum length
- D₁** = Outer diameter hub
- D₆** = Diameter
- D₈** = Outer diameter
- H₁** = Length

- R** = Radius
- H₂** = Distance
- F_K** = Flange thickness
- H₅** = Distance
- YL** = Distance

Identifier	Size	T _{Kmax}	F _{rad}	d _{1kmin}	d _{1kmax}	D	L	L _{min}	D ₁	D ₆	D ₈	H ₁	R	H ₂	F _K	H ₅	YL
		Nm	N	mm	mm	mm	mm	mm	mm	mm	mm	mm	mm	mm	mm	mm	mm
WG7025	25	4700	14500	20	66	250	95	85	95	159	160	16	2,5	42	12	31	44,0
WG7028	50	6200	16500	20	77	280	100	85	110	179	180	16	2,5	42	12	31	44,0
WG7032	75	7800	18500	20	88	320	110	95	125	199	200	17	2,5	45	15	32	46,0
WG7034	100	10000	20000	20	98	340	125	95	140	219	220	17	2,5	45	15	32	46,0
WG7036	130	16000	31000	47	112	360	130	95	160	239	240	19	2,5	45	15	34	47,0
WG7038	160	20000	35000	47	126	380	145	95	180	259	260	19	2,5	45	15	34	47,0
WG7040	200	24000	38500	47	140	400	170	95	200	279	280	19	2,5	45	15	34	47,0
WG7042	300	28500	42000	47	155	420	175	95	220	309	310	19	2,5	45	15	34	47,0
WG7045	400	39000	49000	47	183	450	185	120	260	339	340	22	2,5	60	20	40	61,0
WG7051	500	64000	94000	77	210	510	220	125	295	399	400	22	2,5	60	20	42	61,0
WG7055	600	78000	118000	77	220	550	240	125	310	419	420	22	2,5	60	20	42	61,0
WG7058	1000	127000	129000	102	250	580	260	130	350	449	450	22	2,5	60	20	42	61,0
WG7065	1500	180000	150000	102	295	650	315	140	415	529	530	27	2,5	65	25	47	66,0
WG7066	2100	275000	245000	102	305	665	330	145	430	544	545	34	4,0	65	25	54	69,5
WG7068	2600	328500	265000	102	315	680	350	145	445	559	560	34	4,0	65	25	54	69,5
WG7071	3400	400000	300000	178	335	710	380	165	475	599	600	34	4,0	81	35	59	85,5
WG7078	4200	500000	340000	208	380	780	410	165	535	669	670	34	4,0	81	35	59	85,5
WG7085	6200	685000	380000	238	425	850	450	165	600	729	730	34	4,0	81	35	59	85,5

To continue see next page

TSCHAN® Barrel Couplings

Type TK

Dimensions / Technical data

C	= Pitch circle diameter	S_D	= Disassembly space	J_{sb}	= Moment of inertia at smallest bore diameter
n_{b7}	= Quantity of bore d ₇	G_G	= Whitworth thread	GW_{sb}	= Weight at smallest bore diameter
d₇	= Bore diameter	L_{DD}	= Distance dimension		
S (h9/F8)	= Distance of the flattening	X_a	= Axial gap max.		

Identifier	Size	C	n _{b7}	d ₇	S (h9/F8)	S _D	G _G	L _{DD}	X _a	J _{sb}	GW _{sb}
		mm		mm	mm	mm	inch	mm	mm	10 ⁻³ kgm ²	kg
WG7025	25	220	10	15	220	50	G1/8	5	+/-3	60	12
WG7028	50	250	10	15	250	50	G1/8	5	+/-3	90	16
WG7032	75	280	10	19	280	60	G1/8	5	+/-4	170	23
WG7034	100	300	10	19	300	60	G1/8	5	+/-4	230	29
WG7036	130	320	10	19	320	60	G1/8	5	+/-4	320	35
WG7038	160	340	10	19	340	60	G1/8	5	+/-4	440	45
WG7040	200	360	10	19	360	60	G1/8	5	+/-4	610	59
WG7042	300	380	10	19	380	60	G1/8	5	+/-4	850	73
WG7045	400	400	10	24	400	70	G1/4	9	+/-4	1450	101
WG7051	500	460	10	24	460	70	G1/4	7	+/-6	2860	152
WG7055	600	500	10	24	500	70	G1/4	7	+/-6	3730	180
WG7058	1000	530	14	24	530	70	G1/4	7	+/-6	5350	228
WG7065	1500	600	14	24	580	80	G1/4	7	+/-6	11640	379
WG7066	2100	615	26	24	590	90	G1/4	7	+/-6	13790	426
WG7068	2600	630	26	24	600	90	G1/4	7	+/-6	16070	477
WG7071	3400	660	26	28	640	90	G1/4	13	+/-8	22730	545
WG7078	4200	730	26	28	700	90	G1/4	13	+/-8	35260	725
WG7085	6200	800	26	28	760	90	G1/4	13	+/-8	59650	961

Ordering example: TSCHAN® TK

Identifier	Size	d _{1k}	Further Details
WG7065	1500	140	*

Subject to technical change.