

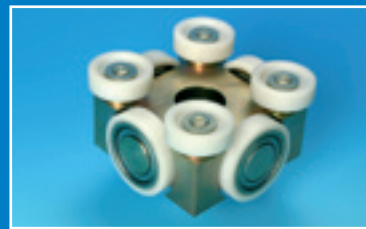
Special Rollers

Custom made



MULTICOMPONENTS INTERNATIONAL B.V.

Sub-assemblies, Trolleys
Tailor-made rollers
Integrated bearings

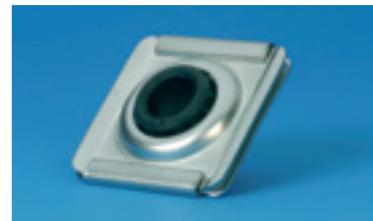


About MultiComponents

MultiComponents International B.V. is an independent technical trading company. It was established in 1996 as a continuation of SKF Multitec. MultiComponents has offices in Montfoort (The Netherlands) and Shanghai (China).

MultiComponents is specialised in design, production and delivery of custom made rollers, bearings and related parts.

Using our technical know-how and knowledge of the market we would be more than glad to help you to find a solution for your technical problems.



Together with a number of selected partners in the Far East for both production of components and logistics, we try to obtain the best possible result. MultiComponents aims to realise an optimal price/quality ratio for you.

With this brochure we attempt to give you a first impression of MultiComponents special rollers and bearings capabilities. If you have any questions or would like to know more, please don't hesitate to contact us.



*Do you have a
catalogue showing
all products?*



No. All products are special, either for a particular customer or for a specific application. A catalogue creates the impression that it concerns standard articles that can be delivered from stock. That's not the case.

Our vision on Special Rollers

Special rollers and bearings distinguish themselves from standard bearings by their unique properties and specifications.

For MultiComponents however a special roller or bearing means more; it is a component that is fully adapted to a particular application.

Characteristics like way of fixing, raceways, lifetime, protection against environmental influences are integrated in the component.



With special rollers and bearings you combine two critical aspects of your business: minimisation of maintenance costs and maximisation of efficiency of the total application.

By looking beyond your borders and considering not only the bearing but all circumstances involved, special rollers could be for you as well a smart solution.



*What is the
lead-time from
design until
first delivery?*



This partly depends on the precision of the functional requirements at the beginning of the project. Assuming that a first series will be approved, the average lead-time will be around 6 months.

Material- and production choices

Because special rollers combine different functions, often they consist of different materials. In most cases the material choice for the individual parts in the component is a compromise between technical requirements and economical considerations.

Questions concerning material that need to be taken into account are for example: Which sort of steel do you choose? Construction steel, chrome bearing steel or stainless steel? Which type of synthetic do you want to use? Thermoplastic, rubber? What type of greasing do you need?



The production technique is also crucial for the end result. Which one is the right one for your special roller? Lathe, cut, metal press, die cast cold forge, bend or roll?

The next question is do we need to perform final treatments, for example grinding, (powder)coating, zinc-plating, hardening?

MultiComponents has gained a lot of practical experience and has at her disposal a widespread knowledge of the different disciplines. This enables MultiComponents to make the right choices for design, assembly and production for your special rollers or bearings.



*What is the
delivery time of
a special roller
or bearing?*



Delivery time of a special roller or bearing is approximately 2-3 months after approval. This delivery time is highly influenced by the various disciplines and operations which are necessary for a multifunctional bearing.

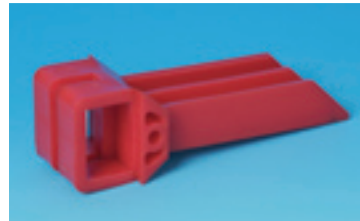
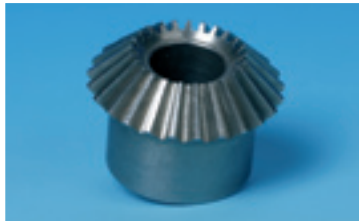
Working method

MultiComponents strives to have insight in all your specific needs. That is why we use a phased project management. This will assure that we - together with your effort - will realise a truly tailor-made solution for you.

The phases are:

0. Initiation: After a mutual introduction a decision is made to start the development of a special roller/bearing.

1. Functional specification: We discuss the wishes and requirements of the component. MultiComponents defines the functional specifications.



2. Product specifications & offer: Based on feedback from our partners we make you an offer including detailed technical drawing, price, delivery time and delivery conditions.

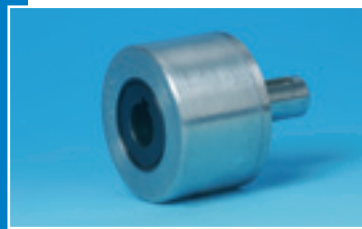
3. Sample phase: Samples are produced and delivered to you. You test the samples and give MultiComponents feedback on your test results.

4. Delivery: As soon as you have approved the samples and all business aspects are agreed, the production is started. We deliver to you on call after production- and transport time.

5. Evaluation: Periodically we evaluate the solution together with you. It can possibly lead to improvements of your product.



*What are the
minimal order quantities
for a special roller?*



This is difficult to say. The minimum order quantity or production batch size is influenced by the production method, the size of the bearing and the total order quantity.

Project management

During the total process - from initiation to evaluation - MultiComponents takes care of the project management.

We make use of template documents so we can easily communicate about the products and the mutual agreements. Herewith an overview of what you may expect from MultiComponents:

Functional design: Description of demands and wishes for a specific special roller/bearing.

Technical drawing: CAM-CAM drawing(s) in 3D-format of the special component.



Offer: Document with price, quantities, delivery time and delivery conditions.

Sample test report: Report stating MultiComponents findings of the samples. The report is send to you together with the sample delivery.

Contract: Mutual contract that confirms the terms of delivery, minimal annual quantities, delivery times, safety stock, prices and possibly the exclusivity of the component.





MULTICOMPONENTS INTERNATIONAL B.V.

Vlasakker 14a

3417 XT Montfoort (NL)

Tel.: +31 (0)348 - 47 10 18

Fax: +31 (0)348 - 47 23 63

E-mail: info@multicomp.nl

www.multicomponents.nl